

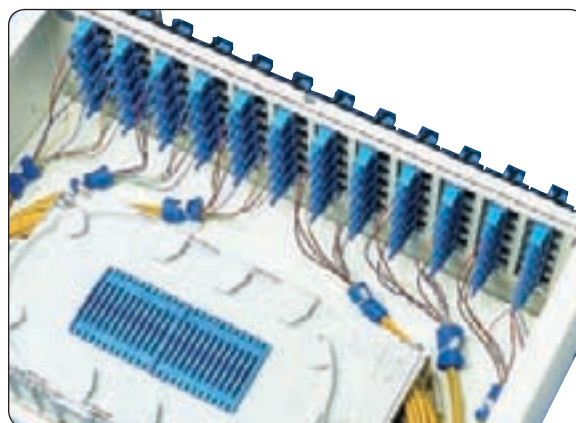


Section 3

Fiber Optic

As an alternative to traditional copper structured wiring solutions, SMP designed the FiberOpticx™ product line to offer customers a complete product set to meet the demands of one of the fastest growing network markets today. The FiberOpticx™ product line provides a wide range of fiber distribution solutions from the telecommunication closet to the building entrance to the main equipment room. Within this product set, customers have discovered a cost effective solution offering quality, performance and flexibility.

As fiber optic cabling needs have increased due to throughput demands, SMP has continuously developed fiber solutions that are developed to last a lifetime. All fiber connectivity components offer quality manufacturing coupled with SMP's trademark enthusiasm towards engineering perfection. Add in the competitive advantage of a Made in the USA label and the flexibility of customized solutions and SMP's FiberOpticx™ interconnect products are a guaranteed solution.



FIBEROPTICX™
CROSS-CONNECT CABINETS

| | |
|---|------|
| Wall Mount Enclosures | 3-2 |
| Rack Mount Enclosures | 3-5 |
| Pre-terminated Enclosures | 3-11 |
| Fiber Accessories – Splice Trays, Connectors, etc. | 3-12 |
| Zone Distribution | 3-14 |
| Adapter Plates and Cassette Modules | 3-15 |
| Jumpers and Cable Assemblies | 3-19 |

Wall Mount Enclosures



SMP's FiberOptix™ Wall Mount Cabinets (WTC) provide a solid foundation for any fiber optic application with features like integrated fiber management and easy cable distribution. Each cabinet may be ordered empty or loaded to meet exact specifications. Every WTC cabinet easily accommodates all cross-connect functions including splicing, termination and interconnects for outside plant backbone and building cables. The WTC series enclosures are scalable, modular and constructed for durability and with SMP's variety of adapter plates, cassette modules and splicing features, the application options are endless.

- Constructed of 16-gauge steel with durable powder-coat finish
- Accommodates snap-in adapter plates and cassette modules
- Removable hinged door provides easy front access and lockable hasp
- Two-tier fiber storage hoops designed to maintain orderly fiber management
- Top and bottom accesses have cable tie-downs/strain relief and full grommets
- Lockable inner door is removable and can be used as a work surface by inserting the tabs into slots provided at the bottom frame of the cabinet
- Port identification sheets are included
- Accommodates PLP COYOTE™ splice trays
- All WTC Series enclosures meet NEMA 12 rated requirements
- Mounting hardware included
- Available in Almond or Black

| FiberOptix™ Wall Mount Cabinets (Empty) | | | | | |
|--|---------------|----------------|-----------------|-------------------|-------------------|
| Catalog Number | Port Capacity | Adapter Plates | Splice Capacity | Splice Trays/Kits | Box Dimensions |
| WMC12A – (Available in Almond only) | 12 | 2 | - | - | 11 x 7 x 3 |
| WTC12/24x – (2 blank plates included for 12 port applications) | 24 | 4 | 24 | - | 13 x 12 x 3.5 |
| WTC48x | 48 | 8 | 48 | W48S | 13 x 5 x 17 x 5.5 |
| WTC72x | 72 | 12 | 72 | W72S | 17 x 12 x 11 |
| WSV72x – (Splice cabinet) | - | - | 72 | W72S | 17 x 8.14 x 4 |
| WTC144x | 144 | 24 | 144 | W144S | 23 x 17 x 11 |
| WSV288x – (Splice cabinet) | - | - | 288 | W288S | 23 x 17 x 11 |

**“x” denotes cabinet color; Replace with A for Almond or B for Black
 ** Port capacity based on standard 6 pack adapter plates

SMP's OC Series Wall Mount Enclosures offer the same modular features of the WTC series with the added outdoor durability for outside plant functionality. The OC series, like all SMP Wall Mount cabinets can be ordered empty or can be easily customized to fit any exact specification. For NEMA 4 requirements, the OCO48 cabinets offer ideal protection from the outdoor elements. For smaller OSP and inside premise application the new OCO6N is a perfect fit with the additional benefit of being NEMA Type 3 compliant.

- OCO Enclosures accommodate snap-in adapter plates and cassette modules
- Lockable draw-hasps ideal for any combination padlock
- Two-tier fiber storage hoops designed to maintain orderly fiber management included
- Port identification sheets are included
- Accommodates PLP COYOTE™ splice trays
- Mounting hardware included



| FiberOptix™ Outside Wall Mount Cabinets (Empty) | | | | | |
|---|---------------|----------------|-----------------|-------------------|-------------------|
| Catalog Number | Port Capacity | Adapter Plates | Splice Capacity | Splice Trays/Kits | Box Dimensions |
| OCO48N | 48 | 8 | - | - | 14.5 x 16.5 x 6.1 |
| OCO48NS | 48 | 8 | 48 | W48S | 14.5 x 16.5 x 6.1 |
| OCW864x | - | - | 144 | W144S | 24 x 36 x 15 |
| OCO6N | 6 | 1 | 12 | - | 10.3 x 7.7 x 3.1 |

* "x" denotes cabinet color; Replace with A for Almond or B for Black



| FiberOptix™ OCO6N Accessories: | |
|--------------------------------|--------------------------------|
| Catalog Number | Descriptions |
| 10801301 | 3/4" Conduit Adapter for OCO6N |
| 10801201 | 1" Conduit Adapter for OCO6N |

Wall Mount Splice Kits



SMP offers user friendly Wall Mount splice kits for all applications. All SMP splice kits are injection-molded and have hinged, clear plastic covers for fiber visibility and maximum protection. Tabs along the tray's side allow for easy fiber routing and all SMP and PLP splice kits are available for smaller fiber capacities.

- All kits include transition trays for cable management and radius control
- Tubing for transporting buffered fibers safely
- Accessories for adapting the trays into the cabinets
- Felt strips and cable ties for securing and strain relieving buffered fibers

| FiberOptix™ Wall Mount Splice Kits | |
|------------------------------------|---|
| Catalog Number | Description |
| 10419901 | PLP® COYOTE Runt Tray for 12 Fiber splices |
| 8003469 | PLP® COYOTE Pup Tray for 24 Fiber splices |
| W48S | Wall Mount Splice Kit for 48 Fiber splices |
| W48RS | Wall Mount Splice Kit, Ribbon Tray, for 48 Fiber splices |
| W48TS | Wall Mount Splice Kit, Thin Tray, for 48 Fiber splices |
| W72S | Wall Mount Splice Kit for 72 Fiber splices |
| W72RS | Wall Mount Splice Kit, Ribbon Tray, for 72 Fiber splices |
| W72TS | Wall Mount Splice Kit, Thin Tray, for 72 Fiber splices |
| W144S | Wall Mount Splice Kit for 144 Fiber splices |
| W144RS | Wall Mount Splice Kit, Ribbon Tray, for 144 Fiber splices |
| W144TS | Wall Mount Splice Kit, Thin Tray, for 144 Fiber splices |
| W288S | Wall Mount Splice Kit for 288 Fiber Splices |

Rack Mount Enclosures



SMP's FiberOptix™ Rack Mount Cabinets (RTC) apply integrated fiber management into a convenient rack mountable solution. Whether ordering empty or loaded for a customized application, the RTC series enclosures deliver rugged durability with the convenience of one source distribution. Each RTC cabinet may be mounted to either a 19" or 23" rack or enclosure and can easily accommodate all cross-connect functions including splicing and termination.

- Constructed of 16-gauge steel with durable powder-coat finish
- Accommodates snap-in adapter plates and cassette modules
- High Density patch & splice
- Front and rear locking options available
- Two-tier fiber storage hoops designed to maintain orderly fiber management included
- Full rubber grommets offer dust protection for all cable entry & exit points
- Removable rear access panel
- Port identification sheets are included
- Accommodates PLP COYOTE™ splice trays
- Mounting hardware included for 19" or 23" rack mounting
- Available in Almond or Black

FiberOptix™ Rack Mount Cabinets (Empty)

| Catalog Number | Rack Units | Port Capacity* | Adapter Plates | Splice Capacity | Splice Trays/Kits |
|------------------------------|------------|----------------|----------------|-----------------|-------------------|
| RTC18x | 2 | 18 | 3 | 24 | R24S |
| RTC36x | 2 | 36 | 6 | 48 | R48S |
| RTC72x | 3 | 72 | 12 | 72 | R72S |
| RTC72Sx – (With Storage Bay) | 4 | 72 | 12 | 72 | R72S |
| RTC144x | 7 | 144 | 24 | 144 | R144S |
| RSC-x | 4 | - | - | 144 | RxxTS |
| RSC-72x | 4 | - | - | 72 | RxxTS |
| RSC-144x | 4 | - | - | 144 | RxxTS |

* "x" denotes cabinet color; Replace with A for Almond or B for Black

** Port capacity based on standard 6 pack adapter plates

FiberOpticx™ Specialized Rack Mount Cabinets



| FiberOpticx™ Rack Mount Cabinets (Empty) | |
|--|--|
| Catalog Number | Description |
| RTD18B | Rack Mount Cabinet, Sliding Drawer, Plexiglas™ cover, 18 port, 1 RU, Black |
| * 18 port capacity based on standard 6 port coupler plates; higher density may be achieved through 8- and 12-pack coupler plates | |

SMP's Specialized Series Rack Mount Cabinets provide the same reliable performance as the RTC series with the added bonus of a specific use design. Each specialized rack mount cabinet offers rugged durability and options for complete customization.

For applications that require easy access to the rear side of installed couplers, the RTD18B fiber termination drawer is a perfect solution. This low profile high density rack mount cabinet simply slides out for obstruction free access for up to 36 ports.

- Removable (Plexiglas™) cover protects contents, and is easily removed to provide access to cable management or splicing area of the cabinet
- Fiber cable managers are used to manage extra fiber while maintaining bend radius requirements
- Allows for up to 36 connections per drawer, with high-density twelve pack coupler plates
- Front side cable support shelf provides room to perform cable management and tie-down.



| FiberOpticx™ Rack Mount Cabinets (Empty) | |
|--|--|
| Catalog Number | Description |
| RTS24B | Rack Mount Cabinet, Sliding Tray, Plexiglas™ cover, 24 port, 2 RU, Black |
| * 24 port capacity based on standard 6 port coupler plates; higher density may be achieved through 8- and 12-pack coupler plates | |

For larger applications that mandate rear coupler access, SMP designed the RTS series rack mount cabinets. With 24 to 48 port capabilities, the RTS rack mount cabinet is ideal for easy contractor installations offering the convenience of a sliding tray that operates both forward and backward. Each cabinet is built to be a strong, durable, high-density, patch and splice solution for fiber optic networking.

- Constructed of 16 gauge steel with a black powder coat finish
- High Density patch and splice
- Open top access and removable front door
- Sliding tray moves forwards and backwards
- Rear locking feature for access control of fiber terminations

(Plexiglas™ is a Registered Trademark of Rohm & Haas)

When higher density applications are needed, SMP's RTR rack mount cabinets offer a compact solution. This rack mountable cabinet offers rugged durability and complete application flexibility and is ideal for small racks and closets. The RTR not only offers high density capabilities, but also left and right rear cable entry and a removable top access panel.

- Constructed of 16 gauge steel with a black powder coat finish
- High density patch and splice in a 1 RU rack space
- Left and right rear cable entry
- Removable top access panel
- Recessed feature for small rack form factor
- Includes (8) Bridge lances and (1) Rear metal quarter-turn bail lock
- Accommodates any SMP snap-in adapter plate and R12 splicing kit



| FiberOptix™ Rack Mount Cabinets (Empty) | |
|--|--|
| Catalog Number | Description |
| RTR12B | Rack Mount Cabinet, Recessed, High Density, 12 Port, 1 RU, Black |
| * 12 port capacity based on standard 6 port coupler plates; higher density may be achieved through 8- and 12-pack coupler plates | |

SMP's RTC series fiber optic cabinets offer a quick solution for easy plug and play connectivity. Whether ordering empty for field installations or completely pre-terminated for easy plug and play installations, the RTC rack mount cabinets are a versatile and flexible option for fiber optic structured cabling systems.

- Constructed of 16 gauge steel with a black powder coat finish
- High density patch and splice in a 1 RU rack space
- Left and right rear cable entry
- Removable top access panel
- Cable management hoops included
- Accommodates any SMP snap-in adapter plate or cassette module
- May be ordered pre-terminated for plug and play operability



| FiberOptix™ Rack Mount Cabinets | |
|---------------------------------|--|
| Catalog Number | Description |
| RTC1UB | Rack Mount Cabinet, With Cover & Fiber Management, 18 Port, 1 RU, Black, Empty |
| RTC1UB-24SC | Rack Mount Cabinet, 24 Port, 1 RU, SC, Simplex, SM/MM, Black |
| RTC1UB-24SCMM | Rack Mount Cabinet, 24 Port, 1 RU, SC, Simplex, MM, Black |
| RTC1UB-24SCSM | Rack Mount Cabinet, 24 Port, 1 RU, SC, Simplex, SM, Black |
| RTC1UB-48DLC | Rack Mount Cabinet, 48 Port, 1 RU, LC, Duplex, SM/MM, Black |
| RTC1UB-48DLCMM | Rack Mount Cabinet, 48 Port, 1 RU, LC, Duplex, MM, Black |
| RTC1UB-48DLSCM | Rack Mount Cabinet, 48 Port, 1 RU, LC, Duplex, SM, Black |



For a multi-media application, SMP offers a universal rack mount patch panel for termination and cable management only. The BHP panel system is well suited for multi-application cabling environments and with SMP's snap-in adapter plates and cassette modules, these panels can be installed in a variety of combinations.

- Constructed of 16 gauge steel with a black powder coat finish
- Strain relief bar offers enhanced cable management
- Tie wraps included for controlled cable
- Accommodates any SMP snap-in adapter plate or cassette module

| FiberOptix™ Universal Fiber Patch Panels (Empty) | | | | |
|--|------------|----------------|----------------|-----------------|
| Catalog Number | Rack Units | Port Capacity* | Adapter Plates | Splice Capacity |
| BHP3 - Panel | 1 | 18 | 3 | - |
| BHP6 - Panel | 2 | 36 | 6 | - |
| BHP72 - Plate | 3 | 72 | 12 | - |
| BHP144 - Plate | 6 | 144 | 24 | - |

* Port capacity based on standard 6 pack adapter plates

Rack Mount Locking Kits



All standard RTC series cabinets are available with a locking option for both front and rear access security. Order the cabinet with a factory installed kit or specify a retro-kit to upgrade any cabinet in service today.

| FiberOptix™ Rack Mount Cabinets with Factory Installed Locking Kits | |
|---|--|
| Catalog Number | Description |
| RTCL18x | Rack Mount Cabinet, 18 port, With Factory Installed Lock Kit |
| RTCL36x | Rack Mount Cabinet, 36 port, With Factory Installed Lock Kit |
| RTCL72x | Rack Mount Cabinet, 72 port, With Factory Installed Lock Kit |
| RTCL72Sx | Rack Mount Cabinet, 72 port, With Storage, With Factory Installed Lock Kit |
| RTCL144x | Rack Mount Cabinet, 144 port, With Factory Installed Lock Kit |

* "x" denotes cabinet color; Replace with A for Almond or B for Black
 ** Port capacity based on standard 6 pack adapter plates

| FiberOptix™ Retro-Fit Rack Mount Cabinet Locking Kits | |
|---|--|
| Catalog Number | Description |
| RTCLK18/36x | Rack Mount Cabinet, 18 or 36 port, With Retro-Fit Lock Kit |
| RTCLK72x | Rack Mount Cabinet, 72 port, With Retro-Fit Lock Kit |
| RTCLK72Sx | Rack Mount Cabinet, 72 port, With Storage, With Retro-Fit Lock Kit |
| RTCLK144x | Rack Mount Cabinet, 144 port, With Retro-Fit Lock Kit |
| * "x" denotes cabinet color; Replace with A for Almond or B for Black | |
| ** Port capacity based on standard 6 pack adapter plates | |

| FiberOptix™ Retro-Fit Rack Mount Cabinet Locking Kits with Metal Doors | |
|--|--|
| Catalog Number | Description |
| RTCLKM18/36x | Rack Mount Cabinet, 18 or 36 port, With Retro-Fit Lock Kit, Metal Door |
| RTCLKM72x | Rack Mount Cabinet, 72 port, With Retro-Fit Lock Kit, Metal Door |
| RTCLKM72Sx | Rack Mount Cabinet, 72 port with storage, With Retro-Fit Lock Kit, Metal Door |
| RTCLKM144x | Rack Mount Cabinet, 144 port with storage, With Retro-Fit Lock Kit, Metal Door |
| * "x" denotes cabinet color; Replace with A for Almond or B for Black | |
| ** Port capacity based on standard 6 pack adapter plates | |

Rack Mount Recess Brackets

SMP's recess brackets allow any RTC series cabinet to easily mount into any enclosure with a front door. By using SMP's recess brackets, the cabinet will be flush with the rack's mounting rails, allowing sufficient room between the cabinet and the door.



| FiberOptix™ Recess Brackets for Rack Mount Cabinets (19" Mounting) | |
|--|--|
| Catalog Number | Description |
| BKTR1836x | Recess Bracket for 18 or 36 port cabinet, 19" Mounting |
| BKTR72x | Recess Bracket for 72 port cabinet, 19" Mounting |
| BKTR144x | Recess Bracket for 144 port cabinet, 19" Mounting |
| * "x" denotes color; Replace with A for Almond or B for Black | |

| FiberOptix™ Recess Brackets for Rack Mount Cabinets (23" Mounting) | |
|--|--|
| Catalog Number | Description |
| BKTR23/1836x | Recess Bracket for 18 or 36 port cabinet, 23" Mounting |
| BKTR23/72x | Recess Bracket for 72 port cabinet, 23" Mounting |
| BKTR23/144x | Recess Bracket for 144 port cabinet, 23" Mounting |
| * "x" denotes color; Replace with A for Almond or B for Black | |

Rack Mount Splice Kits



SMP offers user friendly Rack Mount splice kits for all applications. All SMP splice kits are injection-molded and have hinged clear plastic covers for fiber visibility and maximum protection. Tabs along the tray's side allow for easy fiber routing and all SMP and PLP splice kits are available for smaller fiber capacities.

- All kits include transition trays for cable management and radius control
- Tubing for transporting buffered fibers safely
- Accessories for adapting the trays into the cabinets
- Felt strips and cable ties for securing and strain relieving buffered fibers

| FiberOptix™ Rack Mount Splice Kits | |
|------------------------------------|---|
| Catalog Number | Description |
| R12S | Rack Mount Splice Kit for 12 Fiber splices |
| R24S1UB | Rack Mount Splice Kit for 24 Fiber splices, for use with RTC1UB |
| R24S | Rack Mount Splice Kit for 24 Fiber splices |
| R24TS | Rack Mount Splice Kit, Thin Tray, for 24 Fiber splices |
| R24RS | Rack Mount Splice Kit, Ribbon Tray, for 24 Fiber splices |
| R36TS | Rack Mount Splice Kit, Thin Tray, for 36 Fiber splices |
| R48S | Rack Mount Splice Kit, for 48 Fiber splices |
| R48TS | Rack Mount Splice Kit, Thin Tray, for 48 Fiber splices |
| R48RS | Rack Mount Splice Kit, Ribbon Tray, for 48 Fiber splices |
| R72S | Rack Mount Splice Kit for 72 Fiber splices |
| R72TS | Rack Mount Splice Kit, Thin Tray, for 72 Fiber splices |
| R72RS | Rack Mount Splice Kit, Ribbon Tray, for 72 Fiber splices |
| R96S | Rack Mount Splice Kit for 96 Fiber splices |
| R96TS | Rack Mount Splice Kit, Thin Tray, for 96 Fiber splices |
| R96RS | Rack Mount Splice Kit, Ribbon Tray, for 96 Fiber splices |
| R144S | Rack Mount Splice Kit for 144 Fiber splices |
| R144TS | Rack Mount Splice Kit, Thin Tray, for 144 Fiber splices |
| R144RS | Rack Mount Splice Kit, Ribbon Tray, for 144 Fiber splices |
| R288RS | Rack Mount Splice Kit, Ribbon Tray, for 288 Fiber splices |

Pre-terminated Enclosures

SMP has always strived to provide an easy solution for any structured cabling problem. To alleviate the need for complicated fiber optic installations, SMP offers a complete line of pre-terminated and completely loaded FiberOpticx™ enclosures. Every SMP Wall Mount or Rack Mount cabinet can be factory terminated for easy field installs and comes with testing information for 100% guaranteed performance.



- Any pre-terminated or loaded enclosure can be ordered using any SMP fiber optic enclosure
- Available in a variety of termination options and application combinations (Single-mode or Multi-mode)
- Testing information included with every pre-terminated cabinet

Use the ordering guide below to custom configure any SMP cabinet:

| FiberOpticx™ Pre-terminated Cabinets | | | | | | | |
|--------------------------------------|-------|--------------------|--------------|--------------|-----------|-----------------------|------------|
| Cabinet Type | Ports | Color | Loaded Parts | Adapter Type | Pig Tails | Multi-Mode only | Splice Kit |
| WTC Wall Mount Cabinet | 12 | A Almond | 6 | ST (MM/SM) | P | 6 62.5 μm | S |
| | 18 | | 12 | MMST | | | |
| OCO Outdoor Cabinet | 24 | B Black | 18 | SMST | | 5 50 μm | |
| | 36 | | 24 | SC (MM/SM) | | | |
| RTC Rack Mount Cabinet | 48 | | 36 | MMSC | | 5G 50 μm LO | |
| | 72 | | 48 | SMSC | | | |
| RTD Rack Mount Drawer | 144 | | 64 | SCAPC | | | |
| RTS Rack Mount Slide | | | 72 | SMFC | | | |
| | | | 96 | MMFC | | | |
| RTR Rack Mount Recessed | | | 120 | FCAPC | | | |
| | | | 144 | MMRJ | | | |
| | | | 192 | SMRJ | | | |
| | | | 288 | LC (MM/SM) | | | |
| | | | | MMLC | | | |
| | | | | SMLC | | | |

Example: WTC144A144SMSCPS = Wall Mount Cabinet 144 Port, Almond, With 24 6-pack SMSC adapter plates, With Splice Kit and Pig tails

Fiber Optic Accessories

Xpress Fiber Connectors



SMP's Xpress Fiber Connectors are the new generation in field installable fiber terminations. These connectors eliminate the need for messy epoxies and expensive tools by offering a pre-polished solution that can be installed in minutes. Xpress Connectors have a pre-stubbed factory polished ferrule that joins to the fiber using a precise mechanical alignment and a special low loss index matching gel. Each Connector comes with a specially designed clip that holds the clamping devices open for the fiber to be inserted. Once the fiber is inserted, squeeze the clip to release the blades, remove clip and discard.

- Available for single-mode and multi-mode fibers and come in SC, ST, and LC termination styles
- Easy to assemble
- No expensive tools or epoxy required
- No polishing required
- Fiber can be re-installed
- Meets TIA/EIA 568 performance requirements

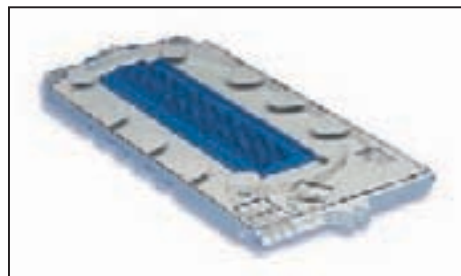
| Specifications | |
|--|--|
| Parameter | Value |
| Insertion Loss: Single-mode 50/125 62.5/125 | Average: 0.2 dB, Maximum: 0.5 dB Average: 0.1 dB, Maximum: 0.5 dB Average: 0.1 dB, Maximum: 0.5 dB |
| Return Loss (Single-mode) | Average: 56.4 dB, Maximum: 45 dB |
| Operating Temperature | -40°C to +75°C |

| FiberOpticx™ Xpress Fiber Connectors | |
|---|--|
| Catalog Number | Description |
| FXC-SCx-6 | Xpress SC Connector, 6 pack |
| FXC-SCx-12 | Xpress SC Connector, 12 pack |
| FXC-SCx-100 | Xpress SC Connector, 100 contractor pack |
| FXC-STx-6 | Xpress ST Connector, 6 pack |
| FXC-STx-12 | Xpress ST Connector, 12 pack |
| FXC-STx-100 | Xpress ST Connector, 100 contractor pack |
| FXC-LCx-6 | Xpress LC Connector, 6 pack |
| FXC-LCx-12 | Xpress LC Connector, 12 pack |
| FXC-LCx-100 | Xpress LC Connector, 100 contractor pack |
| Replace "x" with 5 for 50 micron, 5G for 50 micron 10 Gig, 6 for 62.5 micron or 8 for single-mode | |

Splice Trays

For the ultimate in splicing capabilities, SMP offers fiber cabinets that are completely compatible with Preformed Line Products' COYOTE™ Splice Trays. Available in a variety of options, the PLP Coyote Splice Trays are injected molded for a cost effective solution.

| FiberOpticx™ and PLP COYOTE® Splice Trays | |
|---|--|
| Catalog Number | Description |
| 10180401 | PLP COYOTE® Standard Tray for 24 Fiber splices |
| 10455501 | SMP Splice Tray for (12) 12 Ribbon Fiber capacity |
| 10630501 | PLP COYOTE® Thin Tray for up to 36 Fiber splices |
| 10419901 | PLP COYOTE® Runt Tray for 12 Fiber splices |
| 8003469 | PLP COYOTE® Pup Tray for 24 Fiber splices |
| 80805110 | PLP COYOTE® Splice Tray with Molded slots for up to 36 Fiber splices |



Fiber Strippers and Cleavers

To create a full solution, SMP offers Fiber Strippers and Cleavers to assist in field fiber polishes and terminations. These tools, necessary for any fiber optic project installation, are backed by SMP's 15 year product warranty and are a value added component to the SMP FiberOpticx™ product line.

| FiberOpticx™ Fiber Strippers and Cleavers | |
|---|---|
| Catalog Number | Description |
| FOCT | FiberOpticx™ Precision Fiber Cleaver |
| FOCT2 | FiberOpticx™ Economy Fiber Cleaver (AKA Beaver) |
| FOST | FiberOpticx™ Fiber Stripper |



Zone Distribution



SMP's Fiber Zone Distribution solution for cable tray mounting provides a convenient access point for network zone cross connect points. Each Fiber Distribution module can be ordered blank or custom configured with either SMP Fiber MT Cassette Modules or SMP Fiber Adapter Plates. These modules allow customers to take the distribution point out of the equipment room to where it's needed, while giving installers less installation time and a reduction in cabling costs.

- Fully customizable with SMP MT Cassette Modules or Fiber Adapter Plates
- Expandable design will fit tray widths from 12" to 18"
- Easy installations and additions without disturbing previously installed cable
- Reduces the number of cables and congestion in a cable tray
- All components made in the U.S.

FiberOptix™ Zone "Spider" Distribution Solution (for cable tray)

| Catalog Number | Description |
|----------------|--|
| ZDMB2-WB1218 | Fiber Zone Distribution Module – Bracket only* |

* Order any SMP MT Cassette Module or Fiber Adapter Plate to custom configure your Zone Module



When hours of tedious installation time are not available, consider SMP's pre-assembled fiber optic connectivity solution that effectively eliminates the labor associated with standard fiber field terminations. SMP's Plug-N-Play zone distribution box offers a variety of fiber optic connectivity options with the ease of quick installations. Perfect for the office environment or if rack space is limited, these fiber zone boxes mount anywhere and are 100% factory tested to insure superior performance.

- Available in a variety of pre-assembled Plug-N-Play solutions, including MT to ST, MT to SC, MT to MT-RJ, and MT to LC
- Multi-mode adaptation only
- Mounts anywhere
- 100% performance tested using certified ISO procedures

FiberOptix™ Plug-N-Play Zone Distribution Boxes

| Catalog Number | Description |
|----------------|--|
| PPEAMMDLC-005 | Fiber Zone Box, Portable Patch Enclosure, Dual LC x 6 to MT, 50 µm |
| PPEAMMDLC-006 | Fiber Zone Box, Portable Patch Enclosure, Dual LC x 6 to MT, 62.5 µm |
| PPEAMMDSC-005 | Fiber Zone Box, Portable Patch Enclosure, Dual SC x 6 to MT, 50 µm |
| PPEAMMDSC-006 | Fiber Zone Box, Portable Patch Enclosure, Dual SC x 6 to MT, 62.5 µm |
| PPEAMMQLC-005 | Fiber Zone Box, Portable Patch Enclosure, Quad LC x 3 to MT, 50 µm |
| PPEAMMQLC-006 | Fiber Zone Box, Portable Patch Enclosure, Quad LC x 3 to MT, 62.5 µm |

Fiber Optic Adapter Plates

To accompany all SMP FiberOpticx™ enclosures, SMP developed snap-in fiber adapter plates that are versatile enough to meet any fiber application and durable enough to withstand field installations. All SMP fiber adapter plates guarantee performance parameters for the application specified and can be pre-loaded into SMP fiber cabinets for easy plug and play operability.

- Available in 6-, 8-, and 12-port fiber configurations
- Panel options available include ST, SC, DSC, FC, MTRJ, LC, and others
- High density applications can be reached through Dual and Quad LC applications
- Composite, Metal, or Ceramic sleeve options
- Blank panels are available for use as dust covers
- Plates are available for mounting Bezel style jacks creating a mixed media environments

ST Adapters

| FiberOpticx™ ST Adapter Plates | |
|--------------------------------|---|
| Catalog Number | Description |
| 616MMST | Fiber Adapter Plate, 6-port, ST, Multi-mode, Composite sleeve |
| 616ST | Fiber Adapter Plate, 6-port, ST, Multi-mode/Single-mode, Metal sleeve |
| 616SMST | Fiber Adapter Plate, 6-port, ST, Single-mode, Ceramic sleeve |
| 616SMDST | Fiber Adapter Plate, 6-port, Dual ST, Single-mode, Ceramic sleeve |
| 616ST/SC | Fiber Adapter Plate, 6-port, ST to SC patch, Multi-mode/Single-mode, Composite sleeve |
| 818MMST | Fiber Adapter Plate, 8-port, ST, Multi-mode, Composite sleeve |
| 818ST | Fiber Adapter Plate, 8-port, ST, Multi-mode/Single-mode, Metal sleeve |
| 818SMST | Fiber Adapter Plate, 8-port, ST, Single-mode, Ceramic sleeve |
| 6112MMDST | Fiber Adapter Plate, 12-port, Dual ST, Multi-mode, Composite sleeve |
| 6112DST | Fiber Adapter Plate, 12-port, Dual ST, Multi-mode/Single-mode, Metal sleeve |
| 6112SMDST | Fiber Adapter Plate, 12-port, Dual ST, Single-mode, Ceramic sleeve |

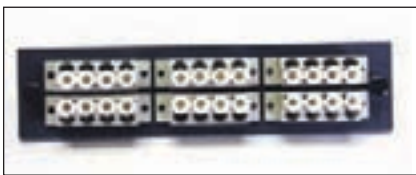


SC Adapters

| FiberOpticx™ SC Adapter Plates | |
|--------------------------------|---|
| Catalog Number | Description |
| 616MMSC | Fiber Adapter Plate, 6-port, SC, Multi-mode, Composite sleeve |
| 616SC | Fiber Adapter Plate, 6-port, SC, Multi-mode/Single-mode, Metal sleeve |
| 616SMSC | Fiber Adapter Plate, 6-port, SC, Single-mode, Ceramic sleeve |
| 616MMDSC | Fiber Adapter Plate, 6-port, Dual SC, Multi-mode, Composite sleeve |
| 616DSC | Fiber Adapter Plate, 6-port, Dual SC, Multi-mode/Single-mode, Metal sleeve |
| 616SMDSC | Fiber Adapter Plate, 6-port, Dual SC, Single-mode, Ceramic sleeve |
| 616SCAPC | Fiber Adapter Plate, 6-port, SC, Single-mode, Angled, Composite sleeve |
| 818MMSC | Fiber Adapter Plate, 8-port, SC, Multi-mode, Composite sleeve |
| 818SC | Fiber Adapter Plate, 8-port, SC, Multi-mode/Single-mode, Metal sleeve |
| 818SMSC | Fiber Adapter Plate, 8-port, SC, Single-mode, Ceramic sleeve |
| 818SCAPC | Fiber Adapter Plate, 8-port, SC, Single-mode, Angled, Composite sleeve |
| 6112MMDSC | Fiber Adapter Plate, 12-port, Dual SC, Multi-mode, Composite sleeve |
| 6112DSC | Fiber Adapter Plate, 12-port, Dual SC, Multi-mode/Single-mode, Metal sleeve |
| 6112SMDSC | Fiber Adapter Plate, 12-port, Dual SC, Single-mode, Ceramic sleeve |
| 6112SMDSCAPC | Fiber Adapter Plate, 12-port, Dual SC, Single-mode, Angled, Ceramic sleeve |



LC Adapters



| FiberOptix™ LC Adapter Plates | |
|-------------------------------|--|
| Catalog Number | Description |
| 616MMDLC | Fiber Adapter Plate, 6-port, Dual LC, Multi-mode, Composite sleeve |
| 616DLC | Fiber Adapter Plate, 6-port, Dual LC, Multi-mode/Single-mode, Metal sleeve |
| 616SMDLC | Fiber Adapter Plate, 6-port, Dual LC, Single-mode, Ceramic sleeve |
| 818DLC | Fiber Adapter Plate, 8-port, Dual LC, Multi-mode/Single-mode, Composite sleeve |
| 818SMDLC | Fiber Adapter Plate, 8-port, Dual LC, Single-mode, Metal sleeve |
| 6112DLC | Fiber Adapter Plate, 12-port, Dual LC, Multi-mode/Single-mode, Metal sleeve |
| 6112MMDLC | Fiber Adapter Plate, 12-port, Dual LC, Multi-mode, Ceramic sleeve |
| 6112SMDLC | Fiber Adapter Plate, 12-port, Dual LC, Single-mode, Ceramic sleeve |
| 6124MMQLC | Fiber Adapter Plate, 24-port, Quad LC, Multi-mode, Metal sleeve |
| 6124SMQLC | Fiber Adapter Plate, 24-port, Quad LC, Single-mode, Ceramic sleeve |

50 Micron 10 Gig Adapters



| FiberOptix™ 50 Micron 10 Gig Adapter Plates | |
|---|--|
| Catalog Number | Description |
| 616SC50G | Fiber Adapter Plate, 6-port, SC, Multi-mode, 50 Micron, Composite sleeve |
| 616DSC50G | Fiber Adapter Plate, 6-port, Dual SC, Multi-mode, 50 Micron, Composite sleeve |
| 6112DSC50G | Fiber Adapter Plate, 12-port, Dual SC, Multi-mode, 50 Micron, Composite sleeve |
| 616DLC50G | Fiber Adapter Plate, 6-port, Dual LC, Multi-mode, 50 Micron, Composite sleeve |
| 6112DLC50G | Fiber Adapter Plate, 12-port, Dual LC, Multi-mode, 50 Micron, Composite sleeve |
| 6124QLC50G | Fiber Adapter Plate, 24-port, Quad LC, Multi-mode, 50 Micron, Composite sleeve |

MT-RJ Adapters

| FiberOptix™ MT-RJ Adapter Plates | |
|----------------------------------|---|
| Catalog Number | Description |
| 616MMRJ | Fiber Adapter Plate, 6-port, MT-RJ, Multi-mode, Composite sleeve |
| 616MMDRJ | Fiber Adapter Plate, 6-port, Dual MT-RJ, Multi-mode, Composite sleeve |
| 818MMRJ | Fiber Adapter Plate, 8-port, MT-RJ, Multi-mode, Composite sleeve |
| 6112MMDRJ | Fiber Adapter Plate, 12-port, Dual MT-RJ, Multi-mode, Composite sleeve |
| 6112SMDRJ | Fiber Adapter Plate, 12-port, Dual MT-RJ, Single-mode, Composite sleeve |



FC Adapters

| FiberOptix™ FC Adapter Plates | |
|-------------------------------|---|
| Catalog Number | Description |
| 616FC | Fiber Adapter Plate, 6-port, FC, Multi-mode/Single-mode, Metal sleeve |
| 616SMFC | Fiber Adapter Plate, 6-port, FC, Single-mode, Ceramic sleeve |
| 616FCAPC | Fiber Adapter Plate, 6-port, ST, Single-mode, Angled, Ceramic sleeve |
| 818MMFC | Fiber Adapter Plate, 8-port, FC, Multi-mode, Composite sleeve |
| 818FC | Fiber Adapter Plate, 8-port, FC, Multi-mode/Single-mode, Metal sleeve |
| 818SMFC | Fiber Adapter Plate, 8-port, FC, Single-mode, Ceramic sleeve |
| 818FCAPC | Fiber Adapter Plate, 8-port, FC, Single-mode, Angled, Ceramic sleeve |



Specialty Adapters

| FiberOptix™ Specialty Adapter Plates | |
|--------------------------------------|--|
| Catalog Number | Description |
| 600 | Fiber Adapter Plate, 6-port, Blank |
| 616BNC | Fiber Adapter Plate, 6-port, BNC adapters loaded |
| 616F | Fiber Adapter Plate, 6-port, F adapters loaded |
| 616SMA | Fiber Adapter Plate, 6-port, SMA adapters loaded |



MT Plug-N-Play Cassette Modules



Designed for speed and effortless installation, SMP's fiber optic cassette modules are available with many adapter choices and offer customers a dependable, performance driven solution. The cassettes simply Snap-In to any SMP FiberOpticx™ rack mount or wall mount cabinet and can be configured to meet any fiber optic protocol. These cassettes provide significant installation savings with no field terminations required. Simply Plug-N-Play!

- Available in 6-, 12-, and even 24-port adapters
- Easily field installable with Snap-In push pin design
- Fits into any SMP FiberOpticx™ rack or wall mount cabinet
- Available in 50, 62.5 or 8.3 micron for either Multi-mode or Single-mode applications
- Both 6- and 12-port modules are available with Duplex ST, SC, MT-RJ, and LC adapters
- 24-port modules are available with MT-RJ and new Quad LC adapters
- Cassette modules are factory terminated and 100% tested for guaranteed performance

| FiberOpticx™ MT Cassette Modules | | | |
|----------------------------------|-------------|-----------|-------------|
| MTCM | | | |
| | Fiber Count | Connector | Fiber Type |
| | 6 | ST | 5 = 50 μm |
| | 12 | SC | 5G = 50 Gig |
| | 24* | RJ | 6 = 62.5 μm |
| | | LC | 8 = 8.3 μm |

* Note: 24 Port Cassette available in LC only

MT Cable Assemblies



The SMP MT to MT cable assembly coupled with SMP's MT Cassette Modules offer a true Plug-N-Play connectivity solution that effectively eliminates standard labor costs associated with fiber field installations. The MT solution ensures guaranteed performance through 100% testing to ISO procedures and provides a low-profile cross connect solution designed for reliability. Included with the MT solution, SMP's pulling eye simplifies connectivity needs by stream-lining connectors for snag-less installations. This product can be used for pulling connected cable through conduit or other channels, enabling quick connections.

- Available in 50/125 μm or 62.5/125 μm multi-mode
- Single-mode also available
- Riser or plenum rated cable can be ordered in any length

| FiberOpticx™ MT to MT Cable Assemblies | | | | | | | | |
|--|-------------|----------------|-------------|----------------|-------------|----------------|----------------|-----------------|
| MT | | | | | | | | |
| | Fiber Count | Fiber Material | Fiber Style | Connector Ends | Fiber Type | Fiber Capacity | Length in Feet | Pulling Eye Kit |
| | 06 | R = Riser | B = Ribbon | F = Female | 5 = 50 μm | TK = Standard | | PK = 1 end |
| | 12 | P = Plenum | R = Round | M = Male | 6 = 62.5 μm | TG = 10 Giga | | PK2 = 2 ends |
| | | | | | 8 = SM | | | |

Example: MT12RBM5TK-03PK = MT Riser Cable Assembly, 12 fiber, Ribbon, Male connectors, Multi-mode 50 micron, 3 feet in length with 1 end pulling kit.

Fiber Optic Jumpers



Get exactly the jumper you need to make the transition from cross-connect point to the electronics. With unmatched insertion loss and exceptional return loss performance, SMP's comprehensive line of fiber jumpers ensures the right connection every time. Each polish is 100% tested, including interferometer inspection of end-face geometry and every assembly is provided with corresponding test data. Available in simplex or duplex, Multi-mode (50/125 or 62.5/125) or Single-mode and a variety of connector types and lengths, SMP's jumpers can be ordered to customize any fiber optic protocol.

- ISO certified
- Telcordia GR-326-CORE compliant
- Automated polishing equipment
- Interferometer testing for End-face geometry
- 100% testing on Multi-mode for insertion loss
- 100% testing on Single-mode for insertion and return loss
- Multi-Fiber distribution cables, single or dual ended terminations
- Discrete connectors utilize ceramic ferrules
- Custom jacket colors for security applications
- Any specified length available
- PC polish is standard

| FiberOptix™ Multi-mode Jumpers | | | | | | | |
|--------------------------------|-------------------|-----------------------|---|-----------------------|---|------------------------------|----------------|
| Fiber Count | Fiber Type | Connector Type | - | Connector Type | - | Length in Meters | Gigabit |
| D = Duplex | 5 = 50 μm | ST | | ST | | 1M | G |
| S = Simplex | 6 = 62.5 μm | SC | | SC | | 2M | |
| | | LC | | LC | | 3M | |
| | | RJ = MT-RJ | | RJ = MT-RJ | | 5M | |
| | | FC | | FC | | 10M | |
| | | | | | | *Any custom length available | |

Example: D6RJ-SC-1M = Duplex 62.5 μm, MT-RJ to SC, 1 Meter in length

| FiberOpticx™ Single-mode Jumpers | | | | | | |
|----------------------------------|----------------|----------------|-----------------|----------------|------------------------------|--|
| | 8 | | <i>Optional</i> | | | |
| Fiber Count | Connector Type | Polish Type | Connector Type | Polish Type | Length in Meters | |
| D = Duplex S = Simplex | ST | UPC = Ultra | ST | UPC = Ultra | 1M | |
| | SC | XUPC = Extreme | SC | XUPC = Extreme | 2M | |
| | LC | APC = Angled | LC | APC = Angled | 3M | |
| | FC | | FC | | 5M | |
| | RJ = MT-RJ | | RJ = MT-RJ | | 10M | |
| | | | | | *Any custom length available | |

Example: S8FCXUPC-SC-3M = Simplex Extreme Polish, FC to SC, 3 Meters in length

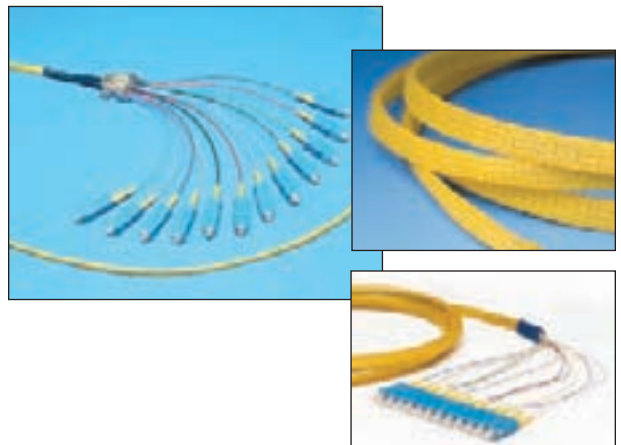
| Factory Polishes - Discretes | | |
|------------------------------|-------------|----------------|
| Polish | Return Loss | Insertion Loss |
| PC | -50 dB | .35 max |
| UPC | -55 dB | .30 max |
| XUPC | -55 dB | .20 max |
| APC | -65 dB | .30 max |



Fiber Optic Pigtails

SMP's fiber optic pigtail assemblies are designed for reliability and performance. All SMP pigtail assemblies may be ordered pre-terminated in any SMP rack or wall mount cabinet or custom configured for field installations. Either way, SMP's pigtail assemblies combine high-precision zirconia ferrules and rugged composite hardware to provide the optical performance, durability and repeatability necessary for today's network applications.

- Available in 6 or 12 bundle pigtails
- Color-coded 900 micron designed for splicing in enclosure environments
- Fiber sleeving color coded to differentiate Multi-mode, Single-mode, and 50 Micron
- Ribbon and jacketed cable pigtails also available
- Any specified length available



| FiberOpticx™ Pigtail Assemblies | | | | | |
|---------------------------------|----------------|---------------------|-----------------|-------------------------------|---|
| P | | | <i>Optional</i> | | - |
| Fiber Type | Connector Type | Polish Type | Fiber Count | Length in Meters | |
| 5 = 50 μm | ST | UPC = Ultra Polish | 06 | 1M | |
| 5G = 50 Gig | SC | APC = Angled Polish | 12 | 2M | |
| 6 = 62.5 μm | RJ = MT-RJ | | | 3M | |
| 8 = Single-mode | LC | | | 5M | |
| | FC | | | 10M | |
| | | | | * Any custom length available | |

Example: P8SCUPC12-3M = Pigtail Assembly, Single-mode, SC, Ultra Polish, 12 fiber, 3 Meters in length